



Spring plates bushings installation instructions

(PR52002P, PR52041P, PR52022P, PR52042P, PR52016P, PR52043P, PR52017P, PR05027P, PR52040P)



Parts needed:	Tools required:
<ul style="list-style-type: none"> ✓ PR52042P – bushings for spring plate 911 or alternative bushings for 912, 944, 968. 	<ul style="list-style-type: none"> ✓ Knife/chisel ✓ Abrasive cloth (or supplied in a set) ✓ Adhesive (if not supplied in set) ✓ Hand press/Hydraulic press ✓ Socket wrench with hex sockets set

Difficulty level:



Procedure:

Old spring plate bushings removal:

1. Remove adjustment bolts, nuts and washers from the spring plate:



2. Clamp spring plate into the vice:



3. Use a knife, chisel or similar tool to cut and remove both old rubber bushings:





4. Scrape the old rubber all the way to the bare metal surface of the spring plate.



5. Once the majority of the rubber is scraped off from one side, you can separate both parts of the spring plate:



6. Use the same procedure to remove the other rubber bushing and scrape as much old rubber compound from the spring plate strut as possible:



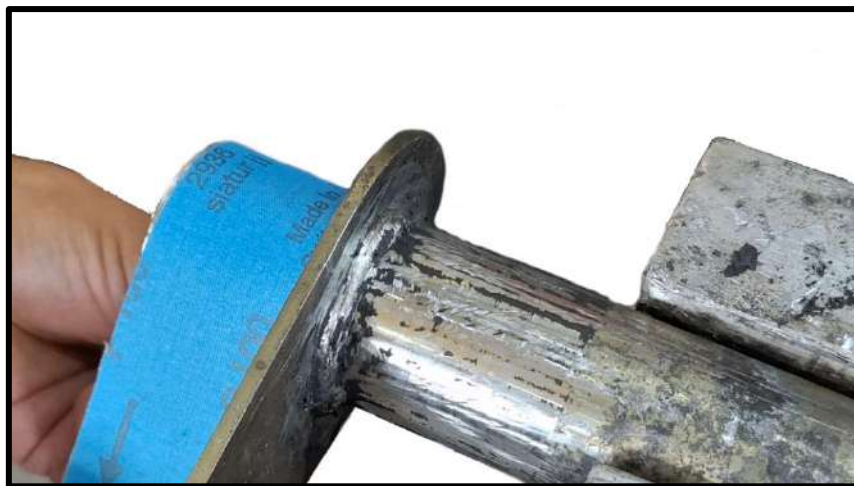


OPTIONALLY – To get a more professional/original look, we suggest to sandblast the spring plates and galvanize them in yellow (bolts and washers included).

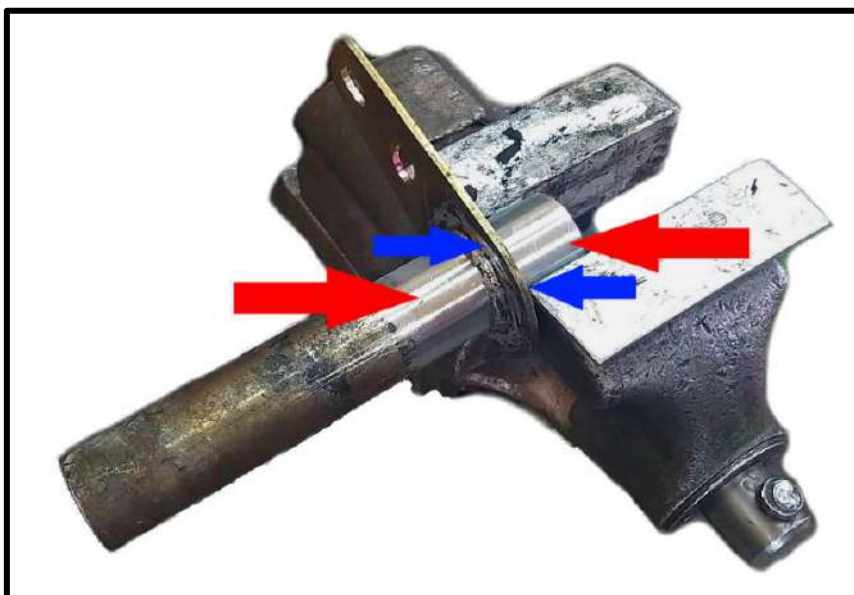


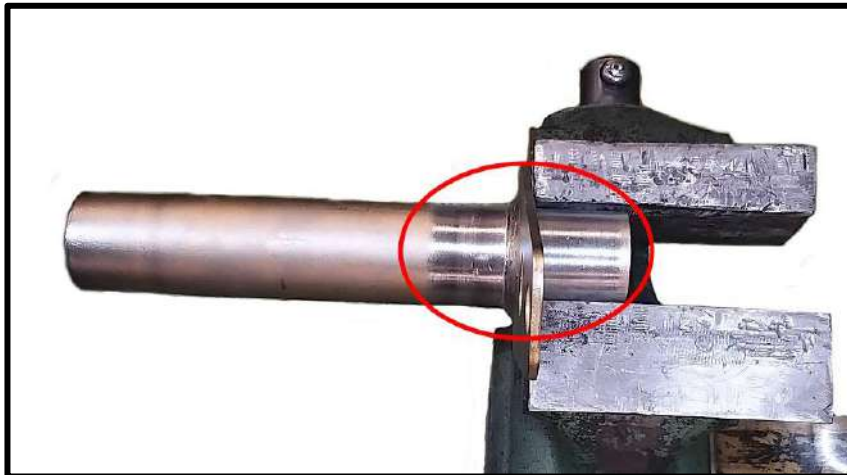
New spring plate bushings replacement:

7. Use the abrasive cloth to sand the surface where the rubber bushings were fitted. Make sure to do it on both sides.



8. Sand the marked surfaces well:





9. Make sure to clean and degrease the part of the spring plate surface, where you apply the adhesive.



10. Clean and degrease the inner side of rubber bushings to remove all the debris. Repeat this cleaning procedure 2-3 times:



- 11.** When cleaned, apply the adhesive on the sanded spring plate surface and also on the angled edge of the rubber bushing:



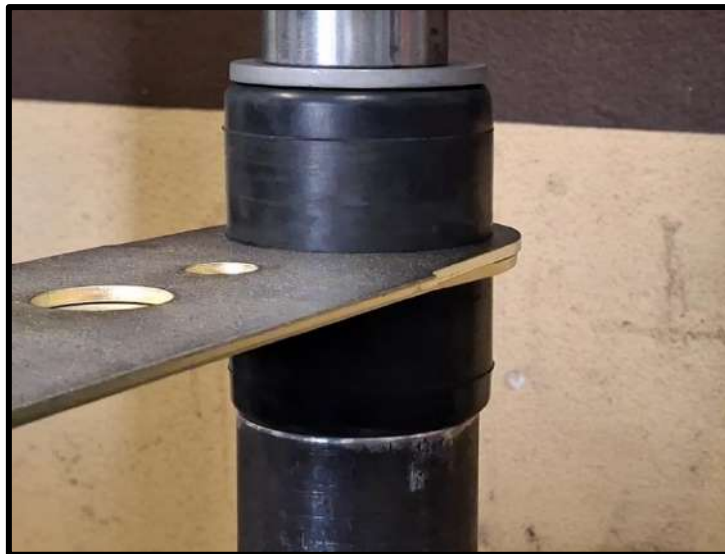
- 12.** Press the rubber bushing on the spring plate strut. Using the hand press is the easiest way to do it. When pressed to the end, let the bushing sit for about 20-30 seconds, so that the glue starts to work properly.



- 13.** Assemble spring plate and apply adhesive on the other end of the spring plate strut:



14. Press the second rubber bushing on the spring plate. When pressed leave it for 20 - 30 seconds for adhesive starting to work.



15. Install all the hardware – bolts, washers and nuts:





16. Your spring plate is now renovated and ready to be installed back on the car:



Thank you for your purchase!



www.prekom-usa.com

www.prekom.si

